

产品名称：SWF 铁氧体绕线系列

应用领域：移动电话（CDMA / GSM / PHS）、无绳电话（DECT/CT1CT2）、远程控制，安全系统、- 无线 PDA 智能手机 -WLL 无线 LAN /鼠标/键盘/耳机、 VCO, RF 模块和其他无线产品等、 基站，中继台、-GPS 接收器

## SWF Series

Wire wound ferrite chip inductor offers the overall combination of low cost,close tolerance and better Q Factor multilayer chip inductor.绕线铁氧体晶片电感提供全面的组合，为具低价、误差小及好的品质系数的积层晶片电感。

## Features

- 1.ferrite core wire wound construction.
- 2.High Reliability due to wire wound type construction
- 3.Small footprint as well as low profile
- 4.Application for DC power line
- 5.The products contain no lead and also support lead-free soldering.

## Lead Free Part Numbering

**SWF**      **2012**      -      **R47**      **M**  
A              B              C              D

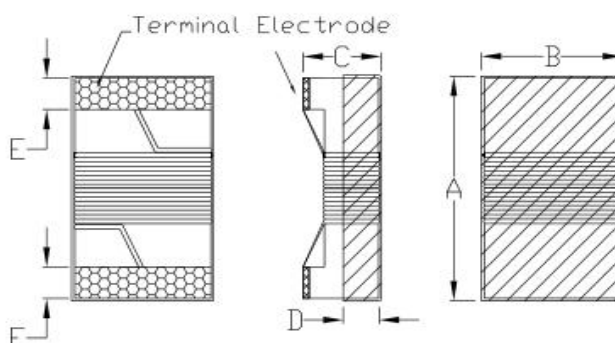
A: Series

B: Dimension      A×B

C: Inductance      R47=0.47uH

D: Inductance Tolerance

K=±10%      M=±20%



Series	A	B	C	D	E
1608	1.65max	1.15max	4.05 max	0.38ref	0.35±0.1
2012	2.40max	1.60 max	1.40 max	0.51ref	0.44±0.1
2520	2.90max	2.50 max	2.10 max	1.20ref	0.55±0.1
3225	3.60max	2.80 max	2.60 max	0.80ref	0.55±0.1



Part Number	Inductance (uH)	Test Frequency (Hz)	Q min.	Test Frequency (MHz)	SRF (MHz) min.	DC Resistance (Ω) max.	Rated Current (mA) max.
SWF1608CF-47N□	0.05	0.5V/7.96M	10	7.96	1500	0.075	1400
SWF1608CF-R10□	0.10	0.5V/7.96M	10	7.96	1150	0.13	1400
SWF1608CF-R12□	0.12	0.5V/7.96M	10	7.96	1100	0.15	1400
SWF1608CF-R15□	0.15	0.5V/7.96M	10	7.96	1050	0.15	1300
SWF1608CF-R22□	0.22	0.5V/7.96M	10	7.96	800	0.15	950
SWF1608CF-R27□	0.27	0.5V/7.96M	10	7.96	775	0.20	710
SWF1608CF-R33□	0.33	0.5V/7.96M	10	7.96	725	0.35	620
SWF1608CF-R39□	0.39	0.5V/7.96M	10	7.96	620	0.39	600
SWF1608CF-R47□	0.47	0.5V/7.96M	10	7.96	540	0.43	570
SWF1608CF-R56□	0.56	0.5V/7.96M	10	7.96	525	0.47	550
SWF1608CF-R68□	0.68	0.5V/7.96M	10	7.96	460	0.52	470
SWF1608CF-R82□	0.82	0.5V/7.96M	10	7.96	410	0.69	400
SWF1608CF-1R0□	1.0	0.5V/7.96M	10	7.96	190	0.81	400
SWF1608CF-1R2□	1.20	0.5V/7.96M	10	7.96	160	0.87	370
SWF1608CF-1R5□	1.50	0.5V/7.96M	10	7.96	100	0.96	350
SWF1608CF-2R2□	2.20	0.5V/7.96M	10	7.96	68	1.20	320
SWF1608CF-3R3□	3.30	0.5V/7.96M	10	7.96	42	1.50	280
SWF1608CF-4R7□	4.70	0.5V/7.96M	10	7.96	34	2.10	260
SWF1608CF-6R8□	6.80	0.5V/7.96M	10	7.96	31	3.10	200
SWF1608CF-100□	10.0	0.5V/2.52M	10	2.52	25	4.80	180

**NOTE: □ TOLERANCE    K=±10%    M±20%**

Part Number	Inductance (uH)	Test Frequency (Hz)	Q min.	Test Frequency (MHz)	SRF (MHz) min.	DC Resistance (Ω) max.	Rated Current (mA) max.
SWF2012CF-R47□	0.47	0.5V/7.96M	10	7.96	720	0.2	750
SWF2012CF-R56□	0.56	0.5V/7.96M	10	7.96	665	0.21	730
SWF2012CF-R68□	0.68	0.5V/7.96M	10	7.96	565	0.28	670
SWF2012CF-1R0□	1.00	0.5V/7.96M	10	7.96	525	0.34	615
SWF2012CF-1R2□	1.20	0.5V/7.96M	10	7.96	473	0.39	550
SWF2012CF-1R5□	1.50	0.5V/7.96M	10	7.96	300	0.45	520
SWF2012CF-2R2□	2.20	0.5V/7.96M	10	7.96	215	0.67	420
SWF2012CF-3R3□	3.30	0.5V/7.96M	10	7.96	95	0.81	385
SWF2012CF-3R9□	3.90	0.5V/7.96M	10	7.96	57	0.88	372
SWF2012CF-4R7□	4.70	0.5V/7.96M	10	7.96	51	0.99	345
SWF2012CF-5R6□	5.60	0.5V/7.96M	10	7.96	44	1.06	335
SWF2012CF-6R8□	6.80	0.5V/7.96M	10	7.96	39	1.21	315
SWF2012CF-8R2□	8.20	0.5V/7.96M	10	7.96	33	1.33	295
SWF2012CF-100□	10.0	0.5V/2.52M	10	2.52	30	1.79	260
SWF2012CF-120□	12.0	0.5V/2.52M	10	2.52	27	1.98	250
SWF2012CF-150□	15.0	0.5V/2.52M	10	2.52	22	2.68	215
SWF2012CF-180□	18.0	0.5V/2.52M	10	2.52	20	3.12	195
SWF2012CF-220□	22.0	0.5V/2.52M	10	2.52	18	3.48	180
SWF2012CF-270□	27.0	0.5V/2.52M	10	2.52	16	3.84	170
SWF2012CF-330□	33.0	0.5V/2.52M	10	2.52	15	4.34	145

**NOTE: □ TOLERANCE    K=±10%    M±20%**

Part Number	Inductance (uH)	Test Frequency (Hz)	Q min.	Test Frequency (MHz)	SRF (MHz) min.	DC Resistance (Ω) max.	Rated Current (mA) max.
SWF2520CF-1R0□	1.00	0.5V/7.96M	12	7.96	345	0.13	1000
SWF2520CF-1R5□	1.50	0.5V/7.96M	12	7.96	100	0.17	850
SWF2520CF-2R2□	2.20	0.5V/7.96M	12	7.96	78	0.21	775
SWF2520CF-3R3□	3.30	0.5V/7.96M	12	7.96	48	0.26	715
SWF2520CF-4R7□	4.70	0.5V/7.96M	12	7.96	46	0.52	505
SWF2520CF-6R8□	6.80	0.5V/7.96M	12	7.96	33	0.72	432
SWF2520CF-8R2□	8.20	0.5V/2.52M	12	2.52	30	0.76	410
SWF2520CF-100□	10.0	0.5V/2.52M	12	2.52	28	0.86	392
SWF2520CF-150□	15.0	0.5V/2.52M	12	2.52	21	1.09	342
SWF2520CF-220□	22.0	0.5V/2.52M	12	2.52	18	1.96	260
SWF2520CF-330□	33.0	0.5V/2.52M	12	2.52	15	2.47	236

**NOTE: □ TOLERANCE    K=±10%    M±20%**

Part Number	Inductance (uH)	Test Frequency (Hz)	Q min.	Test Frequency (MHz)	SRF (MHz) min.	DC Resistance (Ω) max.	Rated Current (mA) max.
SWF3225CF-1R0□	1.00	0.5V/7.96M	10	7.96	290	0.12	1200
SWF3225CF-1R5□	1.50	0.5V/7.96M	10	7.96	260	0.13	1000
SWF3225CF-2R2□	2.20	0.5V/7.96M	10	7.96	190	0.17	880
SWF3225CF-3R3□	3.30	0.5V/7.96M	10	7.96	64	0.22	775
SWF3225CF-4R7□	4.70	0.5V/7.96M	10	7.96	54	0.26	710
SWF3225CF-6R8□	6.80	0.5V/7.96M	10	7.96	34	0.30	660
SWF3225CF-100□	10.0	0.5V/2.52M	10	2.52	25	0.39	570
SWF3225CF-150□	15.0	0.5V/2.52M	10	2.52	17	0.66	440
SWF3225CF-220□	22.0	0.5V/2.52M	10	2.52	16	0.82	400
SWF3225CF-330□	33.0	0.5V/2.52M	10	2.52	12	1.50	285
SWF3225CF-390□	39.0	0.5V/2.52M	10	2.52	12	1.66	270
SWF3225CF-470□	47.0	0.5V/2.52M	10	2.52	10	1.90	260
SWF3225CF-680□	68.0	0.5V/2.52M	10	2.52	9.0	2.29	235
SWF3225CF-101□	100.0	0.5V/1M	10	1.00	7.0	3.48	190
SWF3225CF-151□	150.0	0.5V/1M	10	1.00	5.0	6.55	140
SWF3225CF-221□	220.0	0.5V/1M	10	1.00	4.0	8.23	115
SWF3225CF-331□	330.0	0.5V/1M	10	1.00	2.8	13.70	98
SWF3225CF-471□	470.0	0.5V/1M	10	1.00	2.6	18.10	86
SWF3225CF-681□	680.0	0.5V/1M	10	1.00	2.3	22.0	76

**NOTE: □ TOLERANCE    K=±10%    M±20%**