

Wire Wound Type Common Mode Filter

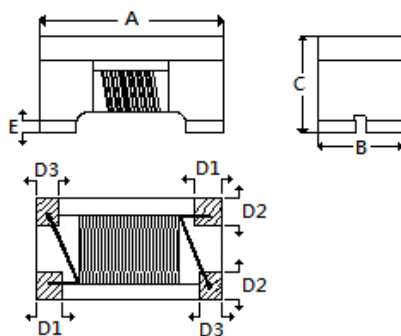
DCM321620F2SF-600T02

1. Features

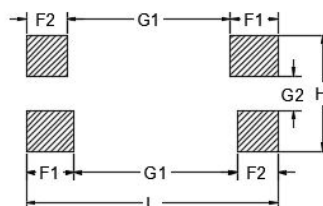
1. High common mode impedance at high frequency effects excellent noise suppression performance.
2. DCM321620F2SF series realizes small size and low profile.
3. 100% Lead(Pb) & Halogen-Free and RoHS compliant.
4. Operating temperature-40~+85°C (Including self - temperature rise)



2. Dimension



Recommended PC Board Pattern



Series	A(mm)	B(mm)	C(mm)	D1(mm)	D2(mm)	D3(mm)	E(mm)	L(mm)	H(mm)	G1(mm)	G2(mm)	F1(mm)	F2(mm)
321620F2SF	3.4±0.2	1.6±0.2	2.0±0.2	0.64±0.1	0.58±0.1	0.54±0.1	0.12 (typ.)	3.7	1.7	2.4	0.5	0.7	0.6

Units: mm

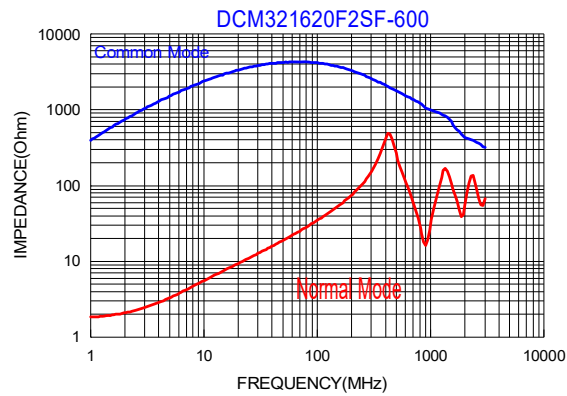
3. Part Numbering



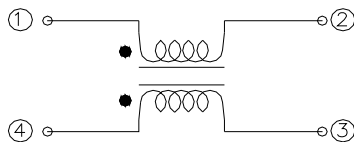
- A: Series
 B: Dimension
 C: Material Ferrite Core
 D: Number of Lines 2=2 lines
 E: Type S=Shielded , N=Unshielded
 F: Lead free
 G: Inductance 600=60uH
 H: Packaging T=Taping and Reel
 I: Rated Current 02=200mA

4. Specification

TAI-TECH Part Number	Inductance(uH) [100kHz/0.1V] Min.	DC Resistance (Ω)Max.	Rated Current (mA)	Rated Volt. (Vdc)	Withstand Volt. (Vdc) max.	IR(Ω) min.
DCM321620F2SF-600T02	60	1.7	200	50	125	10M

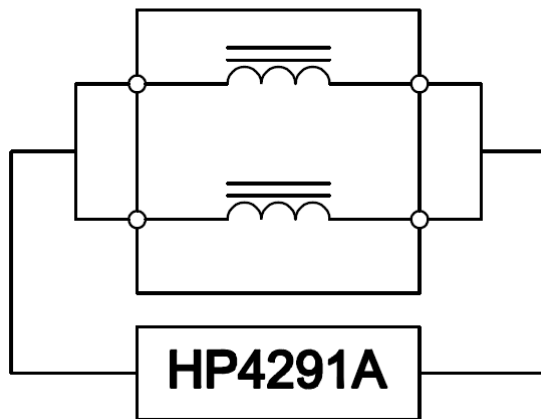


5. Schematic Diagram



6. MEASURING CIRCUITS 2LINE

Common mode



Differential mode

